

*solucionesairbag*

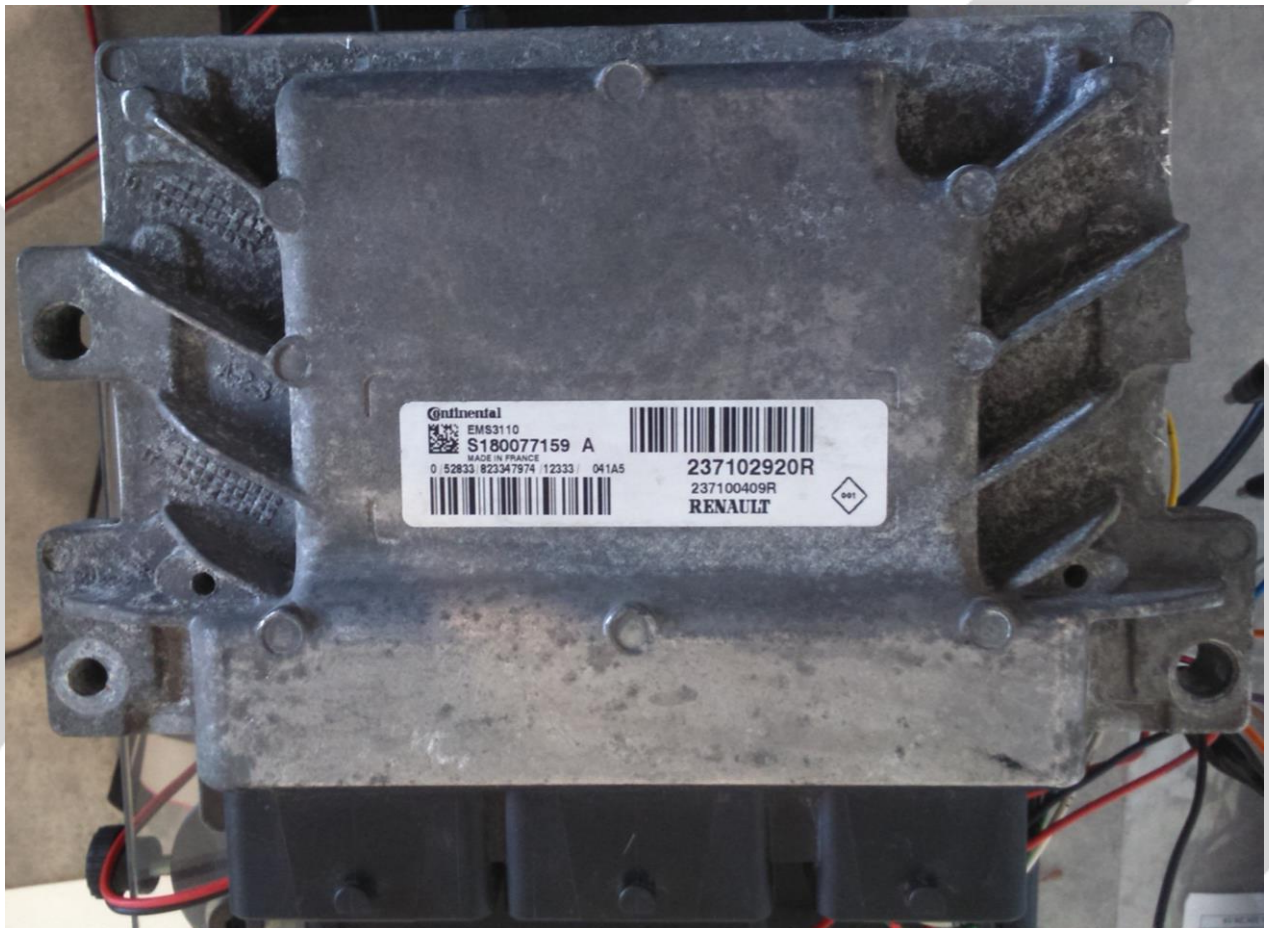
Paseo de los Olivos, 35 28935 Móstoles (Parque Coimbra) Madrid.

Tlf y Whatsapp: 608540592

Correo electrónico: solucionesairbag@gmail.com



**RENAULT MEGANE III RS EMS 3110**  
**CAN 500 KB/s**

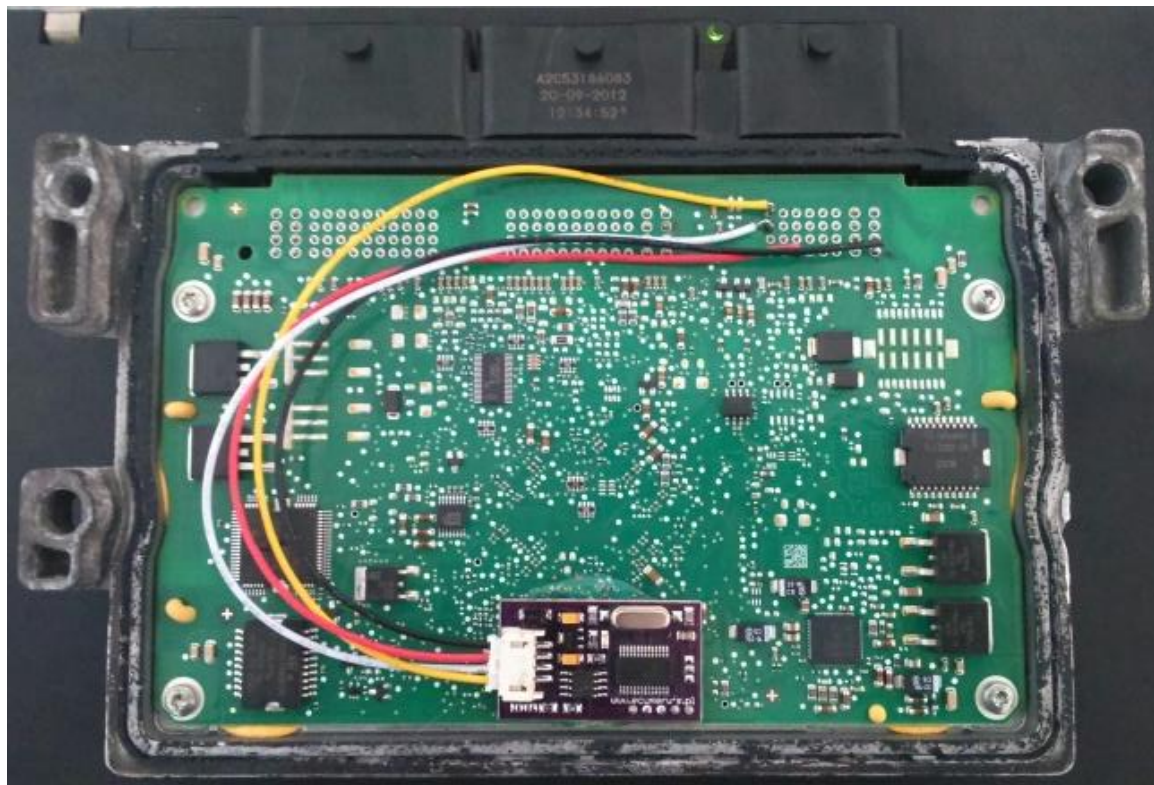


# *solucionesairbag*

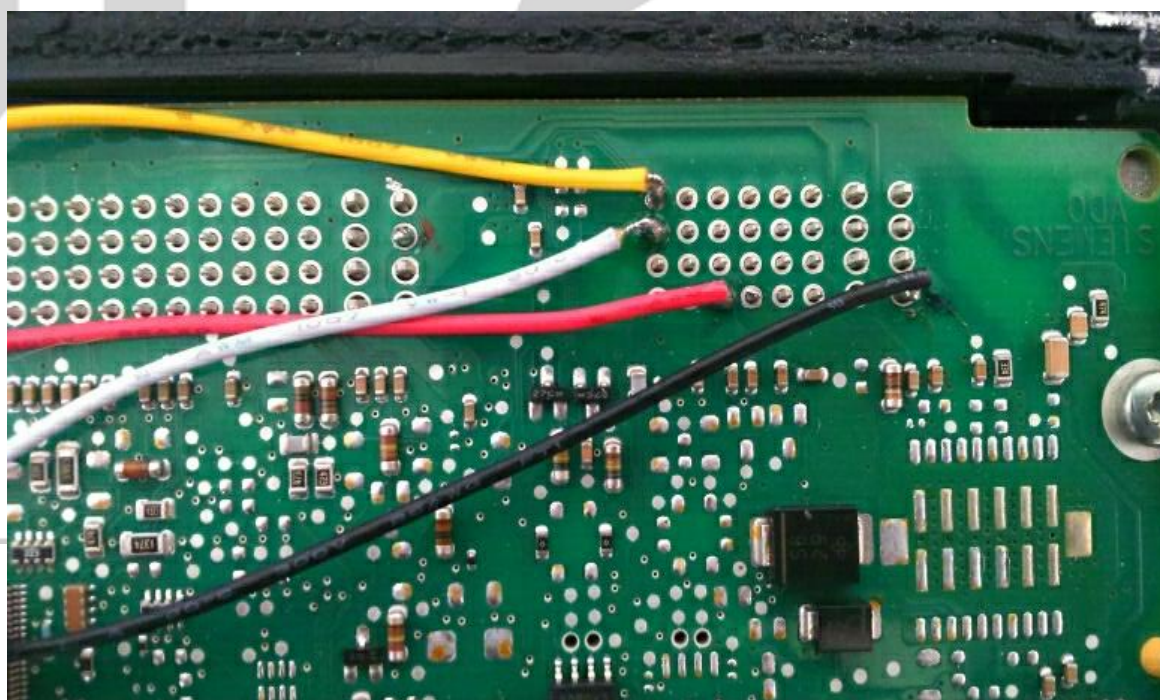
Paseo de los Olivos, 35 28935 Móstoles (Parque Coimbra) Madrid.

Tlf y Whatsapp: 608540592

Correo electrónico: solucionesairbag@gmail.com



**Rojo** = +12v ACC  
**Negro** = -GND  
**Amarillo** = Can H  
**Blanco** = Can L

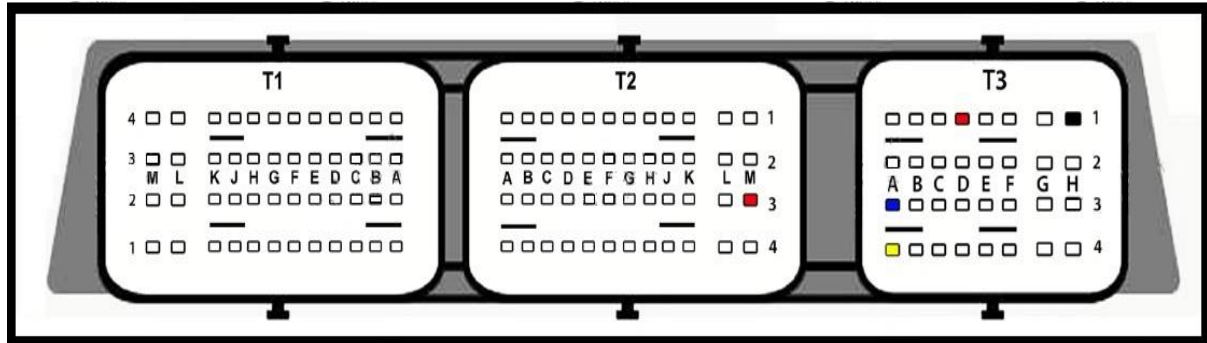


# *solucionesairbag*

Paseo de los Olivos, 35 28935 Móstoles (Parque Coimbra) Madrid.

Tlf y Whatsapp: 608540592

Correo electrónico: solucionesairbag@gmail.com



ROJO (+12v ACC)	T2-PIN M3, T3- Pin D1
NEGRO ( -GND)	T3- Pin H1
AMARILLO (Línea H)	T3- Pin A4
AZUL (Línea L)	T3- Pin A3

**IMPORTANTE:** Necesario alimentar en banco para emparejamiento entre unidad y emulador.

Repetir operación 3 ciclos de contacto.

Verificar funcionamiento: El emulador debe parpadear rápidamente (proceso OK)



## ESTADOS DEL EMULADOR

<b>LUZ LED ROJA</b>	<b>ESTADO</b>
<b>Encendido permanente.</b>	<b>1</b> -Correcta conexión de líneas CAN y ausencia de código IMMO. <b>2</b> -Código IMMO incorrecto.
<b>Enciende y apaga.</b>	<b>1</b> - En caso que la conexión de líneas CAN L y CAN H es incorrecta. <b>2</b> - Velocidad de CAN incorrecta.
<b>Enciende y parpadea dos veces.</b>	Cuando las líneas CAN y el código IMMO son correctos. Es decir, Emulador emparejado con el sistema del inmovilizador de la Unidad del Motor (ECU).



First File - \renualt\MEGANE III RS EMS3110\MPC_EMU\336RT0010409R.MPC																
OFFSET	00	01	02	03	04	05	06	07	08	09	0A	0B	0C	0D	0E	0F
00001B80	00	00	00	00	00	00	00	00	00	00	00	00	00	00	00	00
00001B90	00	00	00	00	00	00	00	00	00	00	00	00	00	00	00	00
00001BA0	00	00	00	00	00	00	00	00	00	00	00	00	00	00	00	00
00001BB0	00	00	00	00	00	00	00	00	00	00	00	00	00	00	00	00
00001BC0	00	00	00	00	00	00	00	00	00	00	00	00	00	00	00	00
00001BD0	00	00	00	00	00	00	00	00	00	00	00	00	00	00	00	00
00001BE0	00	00	00	00	00	00	00	00	00	00	00	00	00	00	00	00
00001BF0	00	00	00	00	00	00	00	00	00	00	00	00	00	00	00	00
00001C00	D8	E0	1D	E0	1C	8B	27	1F	E2	1F	E3	74	00	00	00	00
00001C10	00	00	00	00	00	00	00	00	00	00	00	00	00	00	00	00
00001C20	00	00	00	00	00	00	00	00	00	00	00	00	00	00	00	00
00001C30	00	00	00	00	00	00	00	00	00	00	00	00	00	00	00	00
00001C40	00	00	00	00	00	00	00	00	00	00	00	00	00	00	00	00
00001C50	00	00	00	00	00	00	00	00	00	00	00	00	00	00	00	00
00001C60	00	00	00	00	00	00	00	00	00	00	00	00	00	00	00	00
00001C70	00	00	00	00	00	00	00	00	00	00	00	00	00	00	00	00
00001C80	00	00	00	00	00	00	00	00	00	00	00	00	00	00	00	00
00001C90	00	00	00	00	00	00	00	00	00	00	00	00	00	00	00	00
00001CA0	00	00	00	00	00	00	00	00	00	00	00	00	00	00	00	00
00001CB0	00	00	00	00	00	00	00	00	00	00	00	00	00	00	00	00
00001CC0	00	00	00	00	00	00	00	00	00	00	00	00	00	00	00	00

Second File - \renualt\MEGANE III RS EMS3110\MPC_EMU\336RT0010409R_EMULATOR.																
OFFSET	00	01	02	03	04	05	06	07	08	09	0A	0B	0C	0D	0E	0F
00001B80	00	00	00	00	00	00	00	00	00	00	00	00	00	00	00	00
00001B90	00	00	00	00	00	00	00	00	00	00	00	00	00	00	00	00
00001BA0	00	00	00	00	00	00	00	00	00	00	00	00	00	00	00	00
00001BB0	00	00	00	00	00	00	00	00	00	00	00	00	00	00	00	00
00001BC0	00	00	00	00	00	00	00	00	00	00	00	00	00	00	00	00
00001BD0	00	00	00	00	00	00	00	00	00	00	00	00	00	00	00	00
00001BE0	00	00	00	00	00	00	00	00	00	00	00	00	00	00	00	00
00001BF0	00	00	00	00	00	00	00	00	00	00	00	00	00	00	00	00
00001C00	8C	0F	94	33	E7	14	73	F0	6B	CC	18	EB	00	00	00	00
00001C10	00	00	00	00	00	00	00	00	00	00	00	00	00	00	00	00
00001C20	00	00	00	00	00	00	00	00	00	00	00	00	00	00	00	00
00001C30	00	00	00	00	00	00	00	00	00	00	00	00	00	00	00	00
00001C40	00	00	00	00	00	00	00	00	00	00	00	00	00	00	00	00

En la fila **01C00** modificar los valores entre las columnas **00** y **0B** indicadas en la foto por los valores correspondientes.