

solucionesairbag

Paseo de los Olivos, 35 28935 Móstoles (Parque Coimbra) Madrid.

Tlf y Whatsapp: 608540592

Correo electrónico: solucionesairbag@gmail.com



RENAULT EDC16C36-3.1

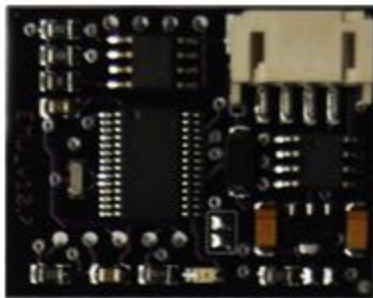
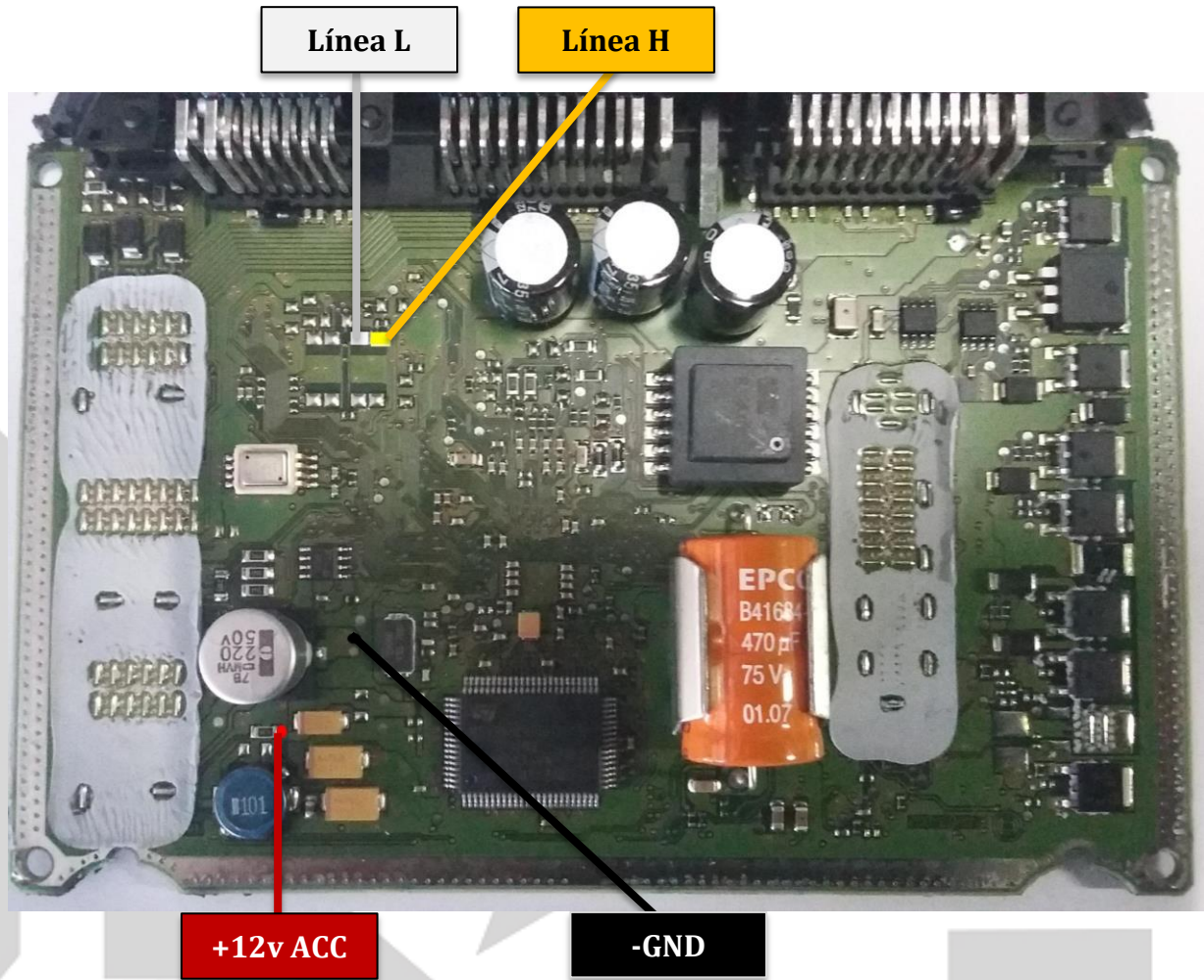


solucionesairbag

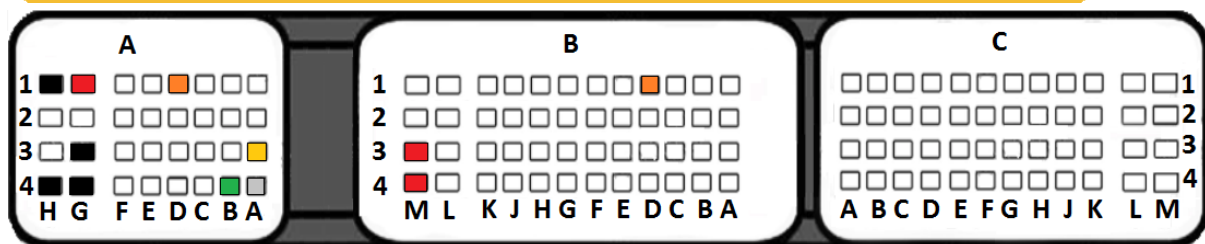
Paseo de los Olivos, 35 28935 Móstoles (Parque Coimbra) Madrid.

Tlf y Whatsapp: 608540592

Correo electrónico: solucionesairbag@gmail.com



Rojo = +12v ACC
Negro = -GND
Amarillo = Can H
Blanco = Can L



OJO: Puede que los pines de CAN L y CAN H, estén intercambiados.

PINEADO	
+BAT bajo Relé Control Motor (12v)	A-Pin G1
+BAT bajo Relé Control Motor (12v)	B-Pin M4
+BAT bajo Relé Control Motor (12v)	B-Pin M3
Activación Relé Control Motor	B-Pin D1
Contacto (Borne 15)	A-Pin D1
Masa (-GND)	A-Pin G3
Masa (-GND)	A-Pin G4
Masa (-GND)	A-Pin H1
Masa (-GND)	A-Pin H4
CAN-L	A-Pin A4
CAN-H	A-Pin A3
K-LINE	A-Pin B4

IMPORTANTE: Necesario alimentar en banco para emparejamiento entre unidad y emulador.

Repetir operación 3 ciclos de contacto.

Verificar funcionamiento: El emulador debe parpadear rápidamente (proceso OK).



ESTADOS DEL EMULADOR

LUZ LED ROJA	ESTADO
Encendido permanente.	1 -Correcta conexión de líneas CAN y ausencia de código IMMO. 2 -Código IMMO incorrecto.
Enciende y apaga.	1 - En caso que la conexión de líneas CAN L y CAN H es incorrecta. 2 - Velocidad de CAN incorrecta.
Enciende y parpadea dos veces.	Cuando las líneas CAN y el código IMMO son correctos. Es decir, Emulador emparejado con el sistema del inmovilizador de la Unidad del Motor (ECU).

solucionesairbag

Paseo de los Olivos, 35 28935 Móstoles (Parque Coimbra) Madrid.

Tlf y Whatsapp: 608540592

Correo electrónico: solucionesairbag@gmail.com



First File - \renault\0281013363 EDC 16C36-3.1\lori																
OFFSET	00	01	02	03	04	05	06	07	08	09	0A	0B	0C	0D	0E	0F
000009C0	00	00	00	00	00	00	00	00	00	00	00	00	00	00	00	00
000009D0	00	00	00	00	00	00	00	00	00	00	00	00	00	00	00	00
000009E0	00	00	00	00	00	00	00	00	00	00	00	00	00	00	00	00
000009F0	00	00	00	00	00	00	00	00	00	00	00	00	00	00	00	00
00000A00	00	00	00	00	FF	E2	00	00	00	00	00	00	00	00	00	00
00000A10	00	00	00	00	00	00	00	00	00	00	00	00	00	00	00	00
00000A20	00	FF	E1	00	00	00	00	00	00	00	00	00	00	00	00	00
00000A30	00	00	00	00	00	00	00	00	00	00	00	00	00	00	00	00
00000A40	FF	FF	FF	FF	05	A8	FB	37	00	00	00	00	00	00	00	00
00000A50	00	00	00	00	00	00	00	00	00	00	00	00	00	00	00	00
00000A60	00	01	02	60	FF	C1	20	49	57	35	AA	94	75	1C	A8	CA
00000A70	55	6B	8A	E3	F7	59	00	00	00	00	00	00	00	00	00	00
00000A80	00	01	2F	2F	FF	7F	00	00	00	00	00	00	00	00	00	00
00000A90	00	00	00	00	00	00	00	00	00	00	00	00	00	00	00	00
00000AA0	00	00	00	00	01	00	01	00	01	00	01	00	01	00	01	00
00000AB0	01	00	01	00	01	00	01	00	00	00	00	00	00	00	00	00
00000AC0	00	FF	D9	00	00	00	00	00	00	FD	FB	00	00	00	00	00
00000AD0	00	00	00	00	00	00	00	00	00	00	00	00	00	00	00	00
00000AE0	00	00	00	00	00	00	00	00	00	00	00	00	FF	DC	00	00
00000AF0	00	00	00	00	00	00	00	00	00	00	00	00	00	00	00	00
00000B00	00	00	00	00	00	00	00	00	00	00	00	00	00	00	00	00

Second File - \renault\0281013363 EDC 16C36-3.1\vedc16c36_emu.bin																
OFFSET	00	01	02	03	04	05	06	07	08	09	0A	0B	0C	0D	0E	0F
000009C0	00	00	00	00	00	00	00	00	00	00	00	00	00	00	00	00
000009D0	00	00	00	00	00	00	00	00	00	00	00	00	00	00	00	00
000009E0	00	00	00	00	00	00	00	00	00	00	00	00	00	00	00	00
000009F0	00	00	00	00	00	00	00	00	00	00	00	00	00	00	00	00
00000A00	00	00	00	00	FF	E2	00	00	00	00	00	00	00	00	00	00
00000A10	00	00	00	00	00	00	00	00	00	00	00	00	00	00	00	00
00000A20	00	FF	E1	00	00	00	00	00	00	00	00	00	00	00	00	00
00000A30	00	00	00	00	00	00	00	00	00	00	00	00	00	00	00	00
00000A40	FF	FF	FF	FF	05	A8	FB	37	00	00	00	00	00	00	00	00
00000A50	00	00	00	00	00	00	00	00	00	00	00	00	00	00	00	00
00000A60	00	01	8C	0F	94	33	E7	14	D9	5A	C1	66	B2	41	26	A5
00000A70	3E	99	4D	BE	F7	87	00	00	00	00	00	00	00	00	00	00
00000A80	00	01	2F	2F	FF	7F	00	00	00	00	00	00	00	00	00	00
00000A90	00	00	00	00	00	00	00	00	00	00	00	00	00	00	00	00
00000AA0	00	00	00	00	01	00	01	00	01	00	01	00	01	00	01	00
00000AB0	01	00	01	00	01	00	01	00	00	00	00	00	00	00	00	00

Cambiar los valores indicados en las filas **0A60** y **0A70** pos los resaltados en la imagen.

MUY IMPORTANTE, EN CASO DE NO ARRANCAR, ES NECESARIO CORTAR EL CABLE CAN L, Y PONER UN INTERRUPTOR, DEPUES DE ARRANCADO EL COCHE, CAMBIAR EL INTERRUPTOR A POSICIÓN DE CONECTADO, ES NECESARIO CADA VEZ.