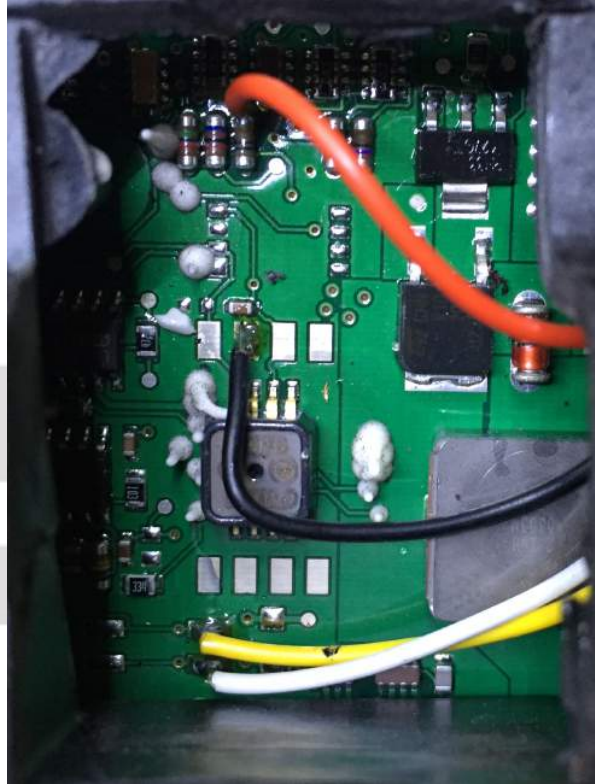




Renault 1.5 DCI Delphi DDCR Velocidad CAN 250Kb/s

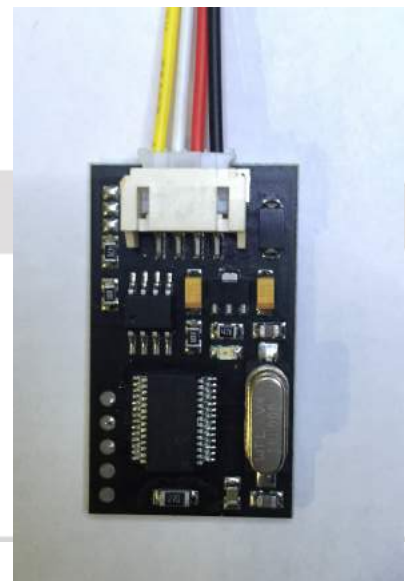
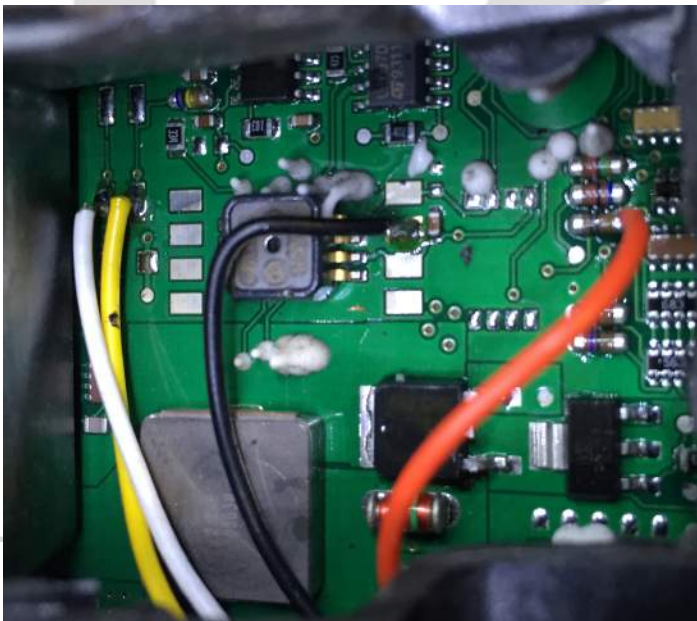


Rojo = 12v
Negro = Negativo
Amarillo = Can H
Blanco = Can L



Rojo = 12v Negro
= Negativo
Amarillo = Can H
Blanco = Can L

Ojo: En algunos casos hay que soldar los cables blanco y amarillo, en los 2 puntos de arriba



solucionesairbag

Paseo de los Olivos, 35 28935 Móstoles (Parque Coimbra) Madrid.

Tlf y Whatsapp: 608540592

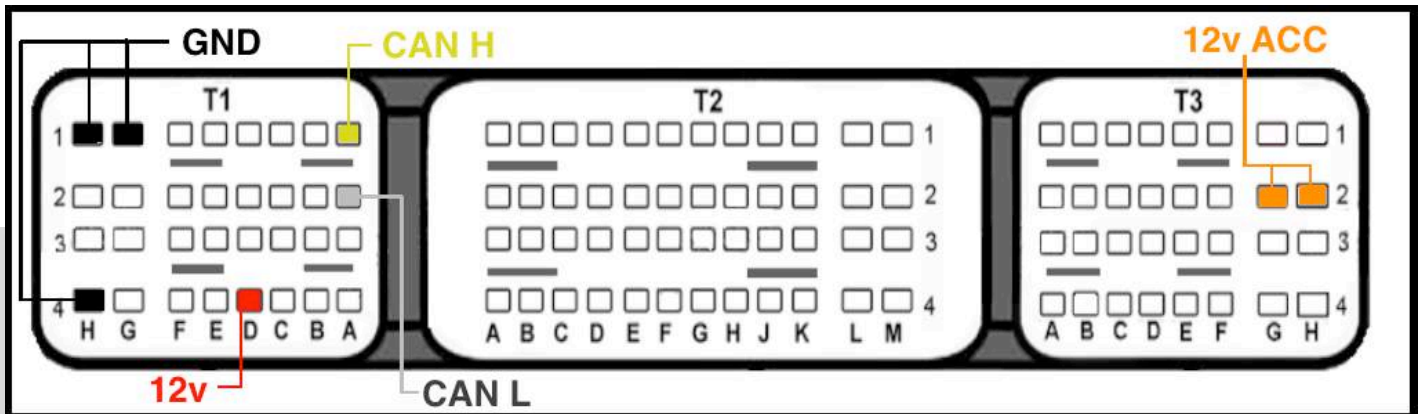
Correo electrónico: solucionesairbag@gmail.com



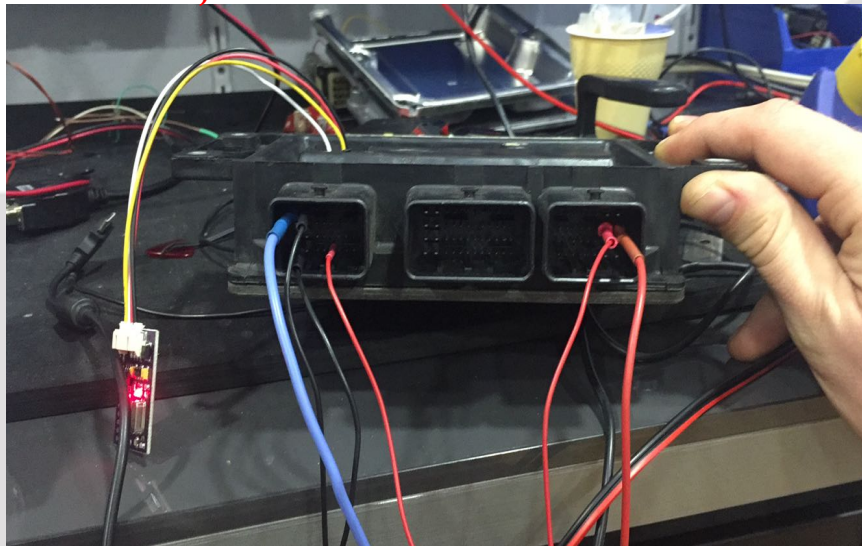
OFFSET	00	01	02	03	04	05	06	07	08	09	0A	0B	0C	0D	0E	0F	
00000000	00	00	66	80	01	00	00	00	24	9F	97	33	83	BF	1B	32	..fTb... \$y-3fi.2
00000010	70	62	9E	E2	8A	09	00	C3	00	00	00	00	00	00	00	00	pbhEЪ...Г.....
00000020	00	00	C3	A7	D4	BB	04	0F	00	C3	00	C3	0F	CC	00	C3	..ГSФ»...Г.Г.М.Г
00000030	21	00	0A	FF	1C	00	24	FF	08	00	58	FF	0C	00	74	FF	!...я...\$я...Хя...тя
00000040	10	00	90	FF	DA	FF	F6	FF	A4	FF	5C	00	AC	74	00	82	..ђябяцяЦя\..т..
00000050	FF	60	00	A0	FF	46	00	CA	FF	24	00	FC	FF	02	00	2E	я...яF.Кя\$..ья...
00000060	00	36	00	EA	FF	6A	00	A6	FF	9D	04	00	B2	FF	FC	FF	..6.кяј...јяк...Іяья
00000070	C4	FF	E2	FF	FE	FF	E4	FF	FC	FF	E6	FF	FA	FF	EC	FF	Дявляюдявяжъяъя
00000080	F4	FF	F2	FF	EE	FF	AE	28	00	C3	FF	14	00	EC	FF	B8	фямяоя@(.Гя...мяё
00000090	FF	A8	00	D8	FF	68	00	F8	FF	28	00	12	00	0E	00	2C	яE.Шяh..шя(.....
000000A0	00	F4	FF	64	00	C3	FF	FF	FF	FF	FF	FF	FF	FF	FF	FF	..фяд.Гяяяяяяяяяя
000000B0	FF	FF	FF	FF	FF	FF	FF	FF	FF	FF	FF	FF	FF	FF	FF	FF	яяяяяяяяяяяяяяяя
000000C0	FF	FF	FF	FF	FF	FF	FF	FF	FF	FF	FF	FF	FF	FF	FF	FF	яяяяяяяяяяяяяяяя
000000D0	FF	FF	FF	FF	FF	FF	FF	FF	C3	FF	FF	FF	FF	FF	FF	FF	яяяяяяяяяяяяяяяя
000000E0	FF	FF	FF	FF	FF	FF	FF	FF	FF	FF	FF	FF	FF	FF	FF	FF	яяяяяяяяяяяяяяяя
000000F0	FF	C3	00	C3	00	00	80	01	01	00	00	00	00	00	00	00	яГ.Г...Ъ.....
00000100	00	00	43	F8	FF	C4	20	00	E3	08	00	CB	10	00	D3	05	..СвяД...з...Л...У.
00000110	C6	0C	01	D0	1B	FB	0D	F3	0B	6B	37	34	03	64	14	E6	Ж...Р...ы...y.k74.d.ж
00000120	03	33	01	1D	01	02	00	00	00	06	00	00	26	F9	0C	07	..3.....&щ...
00000130	61	0D	3A	0B	19	0B	4D	35	C1	02	42	07	22	01	33	01	а...M5B..B...".3.
00000140	55	01	01	00	00	00	6E	02	00	23	72	10	00	00	00	3C	П...n...#r...<

OFFSET	00	01	02	03	04	05	06	07	08	09	0A	0B	0C	0D	0E	0F	
00000000	00	00	00	00	00	00	00	00	00	00	00	00	00	00	00	00	яяяяяяяяяяяяяяяя
00000010	FF	FF	FF	FF	FF	FF	FF	FF	FF	FF	FF	FF	FF	FF	FF	FF	яяяяяяяяяяяяяяяя
00000020	00	00	C3	A7	D4	BB	04	0F	00	C3	00	C3	0F	CC	00	C3	..ГSФ»...Г.Г.М.Г
00000030	21	00	0A	FF	1C	00	24	FF	08	00	58	FF	0C	00	74	FF	!...я...\$я...Хя...тя
00000040	10	00	90	FF	DA	FF	F6	FF	A4	FF	5C	00	AC	74	00	82	..ђябяцяЦя\..т..
00000050	FF	60	00	A0	FF	46	00	CA	FF	24	00	FC	FF	02	00	2E	я...яF.Кя\$..ья...
00000060	00	36	00	EA	FF	6A	00	A6	FF	9D	04	00	B2	FF	FC	FF	..6.кяј...јяк...Іяья
00000070	C4	FF	E2	FF	FE	FF	E4	FF	FC	FF	E6	FF	FA	FF	EC	FF	Дявляюдявяжъяъя
00000080	F4	FF	F2	FF	EE	FF	AE	28	00	C3	FF	14	00	EC	FF	B8	фямяоя@(.Гя...мяё
00000090	FF	A8	00	D8	FF	68	00	F8	FF	28	00	12	00	0E	00	2C	яE.Шяh..шя(.....
000000A0	00	F4	FF	64	00	C3	FF	FF	FF	FF	FF	FF	FF	FF	FF	FF	..фяд.Гяяяяяяяяяя
000000B0	FF	FF	FF	FF	FF	FF	FF	FF	FF	FF	FF	FF	FF	FF	FF	FF	яяяяяяяяяяяяяяяя
000000C0	FF	FF	FF	FF	FF	FF	FF	FF	FF	FF	FF	FF	FF	FF	FF	FF	яяяяяяяяяяяяяяяя
000000D0	FF	FF	FF	FF	FF	FF	FF	FF	C3	FF	FF	FF	FF	FF	FF	FF	яяяяяяяяяяяяяяяя
000000E0	FF	FF	FF	FF	FF	FF	FF	FF	FF	FF	FF	FF	FF	FF	FF	FF	яяяяяяяяяяяяяяяя
000000F0	FF	C3	00	C3	00	00	80	01	01	00	00	00	00	00	00	00	яГ.Г...Ъ.....

Cambiar los valores de fila 00 y 010 por valor 00 00



LAS REFERENCIAS DE N° Y LETRAS ESTAN AL REVES, FIJARSE EN LA FOTO ABAJO



IMPORTANTE: Necesario alimentar en banco para emparejamiento entre unidad y emulador.

Repetir operación 3 ciclos de contacto.

Verificar funcionamiento :El emulador debe parpadear rápidamente (proceso OK)